

Orona 3G

# Domo PLUS

Ceilings and lighting LED - Automatic lighting switch-off included

MODEL\*



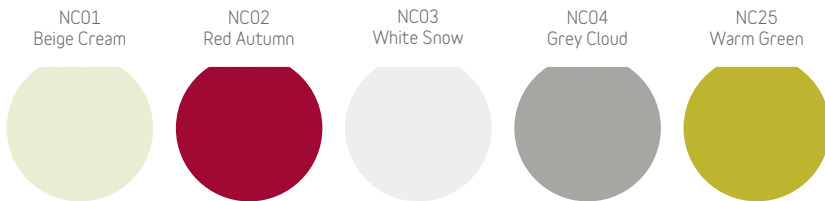
OTHERS

- Emergency hatch (UP37-UP41)
- Fan

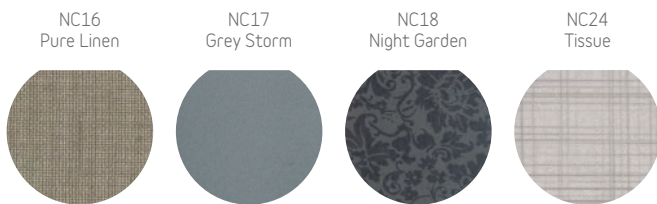
\* Available Lighting models dependant on car dimensions - please enquire.

## Car walls

NECOMPACT COLOUR



NECOMPACT TEXTURE



NECOMPACT WOOD



PANEL STAINLESS



GLASS AMBIENCE



OTHERS

- Without cladding (for local fit out)
- Tip-up seat
- 2 Entrances or 'Through car' for 180, 'Front/Adjacent' for 90 & 270

## Car operating panel



### OTHERS

- Double car operating panel
- Horizontal car operating panel

## Car indicator



7 Segment



Dot-matrix



TFT

### OTHERS

- Car direction arrows
- Overload indicator (buzzer & light)
- Voice synthesizer
- Direction arrows on entrance return
- Car gong
- Inductive acoustic coupler

## Landing indicator



7 Segmentos



Matriz puntos



TFT



Wall landing indicator

### OTHERS

- Next departure indicator
- Landing gong

## Car push buttons



Orona Braille circular model



Model with additional contrast

### OTHERS

- Door close push button
- Key switch push button (Standard or eurocylinder)
- External call cancelling
- Coded call

Orona 3G Series push buttons are water-resistant (IPX3 under EN 60529) and have fully passed the impact and fire tests defined in the EN 81-71 standard.

For enhanced anti-vandalism resistance needs (Category 1), Orona offers its comprehensive PPSS 03G anti-vandalism solutions, which comply with the EN 81-71 standard in its entirety (push buttons, displays, doors, lighting, ceilings, walls, floors, mirrors, enclosures, etc.).

## Landing push buttons



Push buttons to suit the lifts control type (1 or 2 push buttons)



Key switch push button (standard or eurocylinder)



Surface mounted push buttons

## Mirrors

MH (Mirror 1/2)  
 MT (Mirror 3/4 narrow)  
 Rear-view mirror (EN 81-70)

### FINISH

01 Clear  
 02 Smoked

## Bumprails

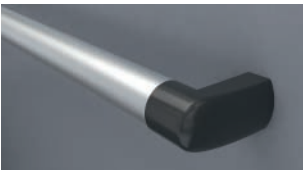
Wood  
 Stainless steel  
 PVC  
 Double bumprail

## Skirtings

SK01 Anodized Aluminium (St St finish)  
 SK02 Lacquered Aluminium

## Handrails

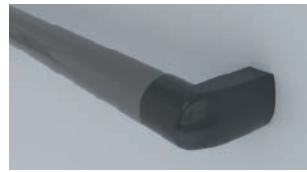
HR01 (Aluminium tube)



HR02 (Aluminium tube)



HR03 (Aluminium tube)



HR04 (Stainless steel tube)



## Car operating panel material and/or ceiling and/or doors (car and landing)

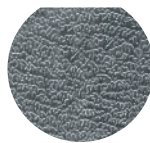
ST01  
St St Base



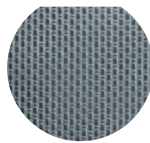
ST02  
St St Plus



ST03  
St St Elephant Skin Pattern



ST04  
St St Linen Pattern



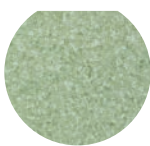
## Floors

### SC-PVC HIGH

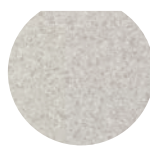
SC01  
Red Cherry



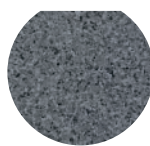
SC02  
Green Leaf



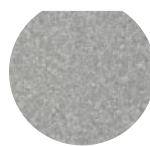
SC03  
Grey Ice



SC04  
Grey Storm



SC05  
Grey Silver



SC06  
Beige Sand



SC07  
Black Circles

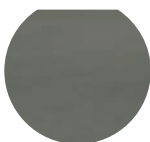


### SW CERAMICS · Available subject to dimensions

SW01  
Black Basalt



SW02  
Grey Cement



SW03  
Grey Pearl



SW04  
Beige Basalt



SW06  
Brown Earth



### OTHERS

- Prepared for granite (23 mm)
- Prepared for PVC (23 mm or 3 mm in restricted pits)