



Orona

Trolley Lifts

Giving robust and dependable floor to floor movement of goods



Quality Trolley Lift

Load:	250kg and 300kg
Car:	Constructed in mild steel, finished in a tough grey baked enamel. Stainless steel as an option.
Entrances:	Landing entrances are protected by a single hinged steel door with a grey baked enamel finish as standard, or optional concertina shutter leaf gates with a galvanised finish. All doors are fitted to our structure and have safety locks to comply with safety regulations.
Car Entrance Protection:	Whilst it is not essential to fit a collapsible gate to the car on the Trolley Lifts with single entry to configurations, it is highly recommended to do so. However, they must be fitted on all the Trolley Lifts with entrance positions on opposite or adjacent sides.
Mounting:	The Trolley Lift is supplied in a structure-supported frame which is galvanised for longer life. We do not require a separate motor room or 'load-bearing' lift shaft.
Floors Served:	Can serve up to six floors.
Entry Choice:	Up to three entrances can be fitted on each floor.
Speed (nominal):	0.17m/s.
Control:	Fully automatic push button control, with call and despatch facilities at each entrance for extra reassurance.
Indicators:	'Lift arrival', 'lift occupied' and 'lift position' indicators are fitted at each entrance, together with an audible lift arrival buzzer.
Operation:	The operation is smooth and quiet with a highly efficient motor winding unit and reliable controller. Combined with a counter-balance drive system, this ensures electrical consumption is minimal.
Winding Unit:	Mounted at the top of the lift structure within the headroom dimensions shown overleaf. The motor drives a high quality reduction gearbox fitted with a traction vee-sheave. An electro-magnetic disc brake is supplied, with emergency release mechanism.
Electric Supply:	415 Volt-3 phase-50Hz. A 16amp isolator should be supplied for the lift by your electrician to be fixed adjacent to the lift at the top floor served.
Safety:	Once installed, tested, commissioned and all the building work is complete, the Trolley Lift will comply with the Essential Safety Regulations (ESRs) of the Supply of Machinery (Safety) Regulations 2008, otherwise known as the Machinery Directive.



Installation notes and builder's work



- | | |
|--|--|
| 1 Quiet and Efficient Powerful Motor | 5 Hinged Doors or Shutter Leaf |
| 2 Easy-Clean Finish | 6 Robust Push Buttons, Fully Automatic Control |
| 3 Galvanised Framework for Long Life | 7 Low Pit or Ramp |
| 4 Interlocked Entrances for Extra Safety | 8 Structure Supported Frame |

Builder's Work

Preliminaries

The Trolley Lift can be installed by our fitters in just a few days with the minimum disruption to premises. Preliminary builder's work is straightforward. All that is normally required prior to installation is an appropriately-sized opening in each floor, a flat level base capable of supporting downward deadloads and an electrical power supply at the top floor served.

We can provide your builder with exact builder's work details and drawings for your installation and, where necessary, liaise directly with the builder to ensure the whole operation runs smoothly.

After the Installation

Your builder will need to provide an enclosure around the Trolley Lift to protect against moving parts and conform with your local fire regulations. Permanent safe access to the motor must be provided to comply with current safety regulations. The lift installation and associated builder's work should comply with the Supply of Machinery (Safety) Regulation 2008 and be 'CE' marked accordingly.

Installation Notes:

Headroom

The floor to ceiling height at the top floor served.

Shaft

These dimensions give the minimum inside shaft width and depth that must be provided to enable your Trolley Lift to be installed.

Pit

The Trolley Lift normally serves level with the floor and a pit would be required at the bottom floor served.

If you are unable to provide a pit, the Trolley Lift can be installed to serve at 350mm above the lowest floor.

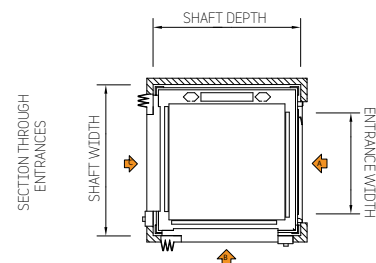
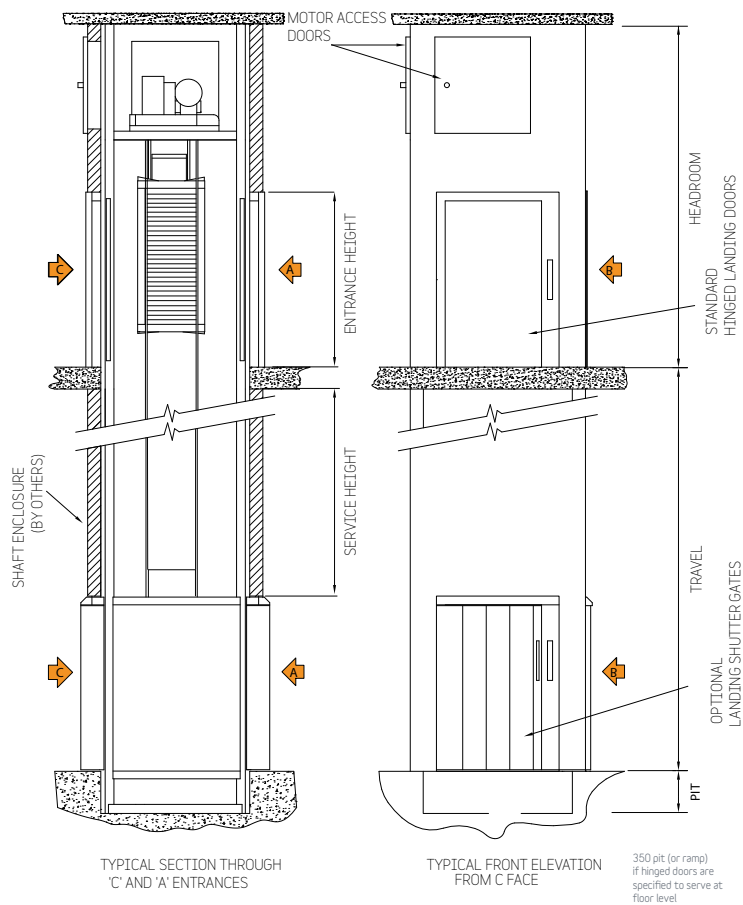
Some of the pit and headroom dimensions can be further reduced by modifying our stock models - please contact us for details.

All dimensions are nominal and in mm.

MODEL	CAPACITY	CAR			SHAFT		ENTRANCE		SERVING HEIGHT (variable)	PIT DEPTH	HEAD ROOM
		WIDTH	†DEPTH	HEIGHT	WIDTH	DEPTH	WIDTH	HEIGHT			
250H	250kg	1000**	1000**	1200	1320	1320	900**	1200	FLOOR LEVEL	350*	2800*
250HP	250kg	1000**	950**	1175	1320	1320	795**	1090	FLOOR LEVEL	350*	2800*
250C	250kg	1000**	1000**	1200	1320	1320	770**	1200	FLOOR LEVEL	350*	2800*
250CP	250kg	1000**	950**	1175	1320	1320	770**	1090	FLOOR LEVEL	350*	2800*

*** IMPORTANT NOTE: PIT & HEADROOM:** The Trolley Lift normally serves at floor level and would require a pit in the lowest floor. If you are unable to provide a pit the Trolley Lift can be installed to serve at 350mm (250kg unit can be updated to 300kg) above the lowest floor and a ramp will need to be provided by your builder. A reduction in the headroom and pit depth on the 250kg model is possible - please contact us for details.

**** NOTE:** When the car is fitted with additional gates on a through or adjacent entry arrangement, the car width/depth is reduced by a further 50mm nominal.



Choice of entrance arrangements

Up to three way entry on every floor is possible.

The sectional plans above show the many arrangements available with the Trolleylift.